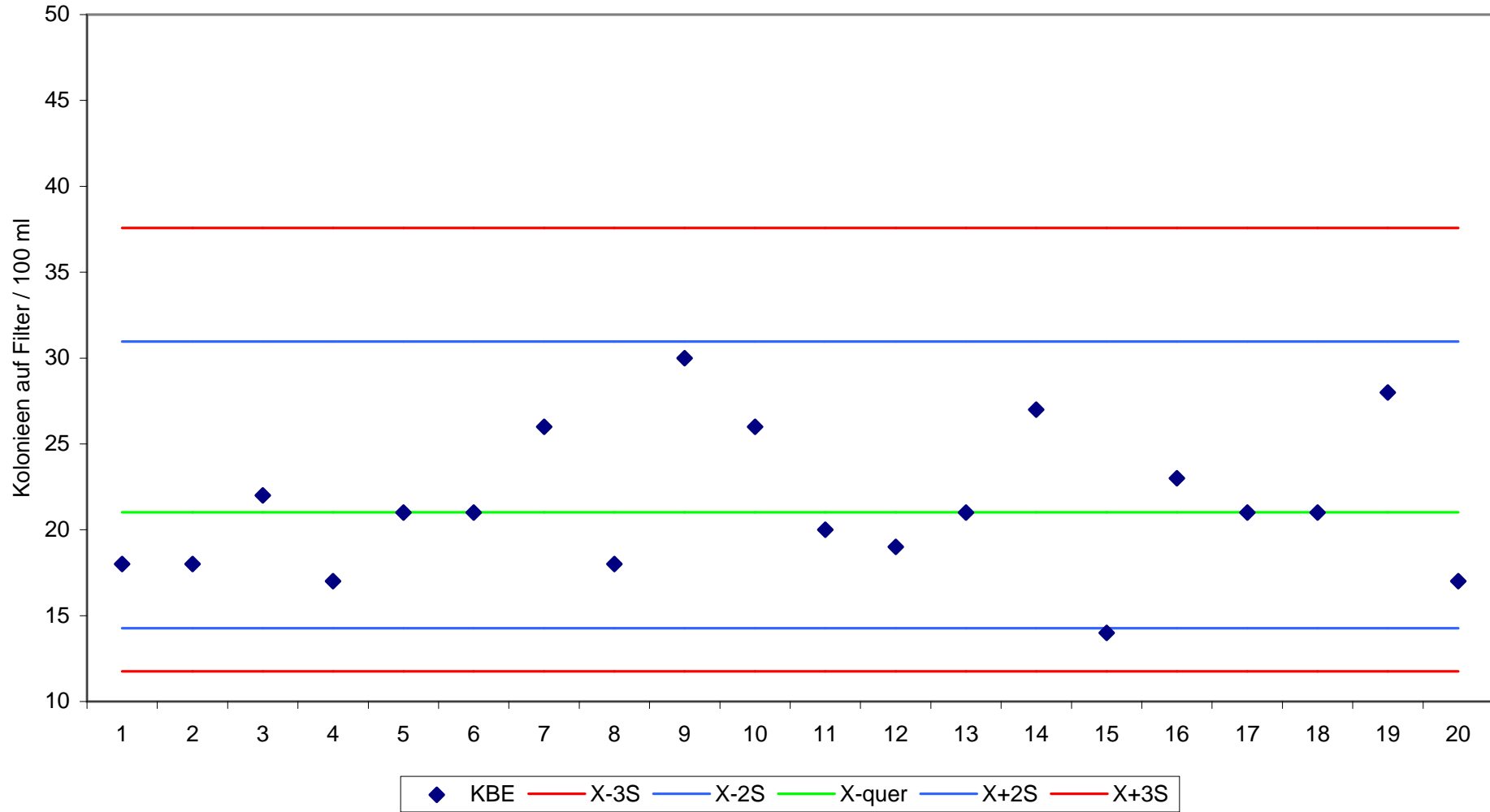
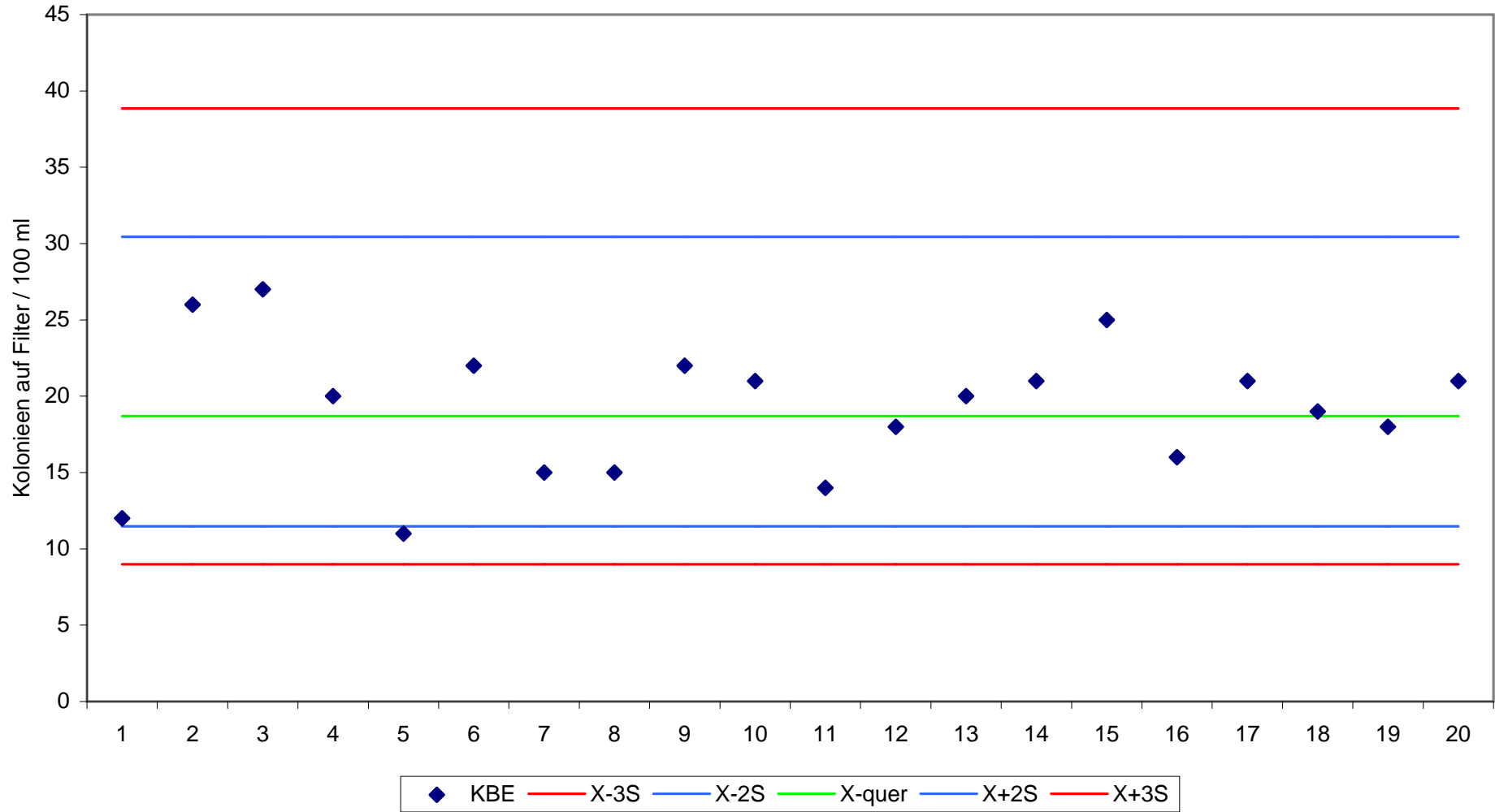


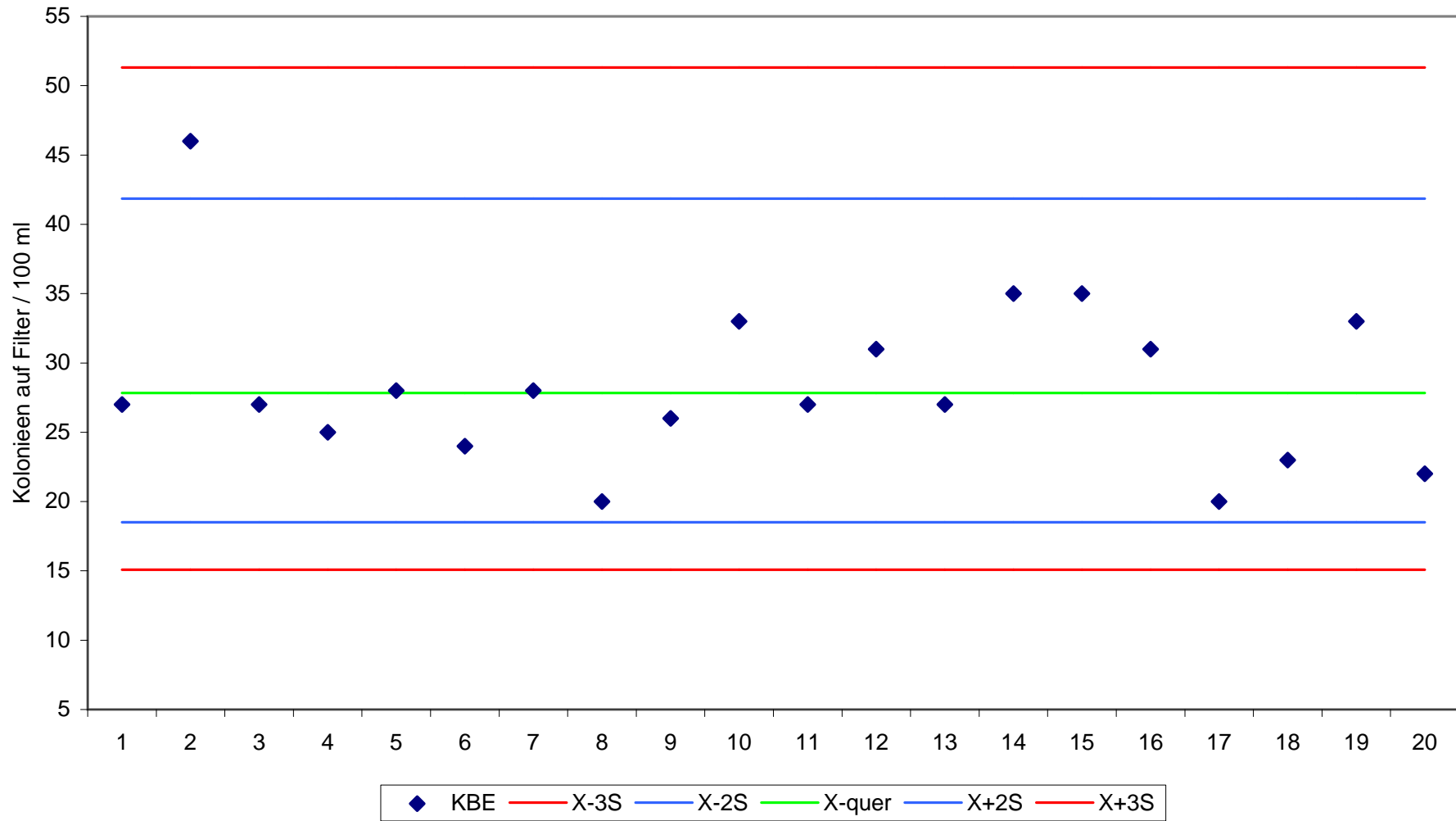
Qualitätskontrolle Ringtest 3-2014 Coliforme Bakterien (TTC-Agar) Gr A 20 Rückstellproben im RV Labor



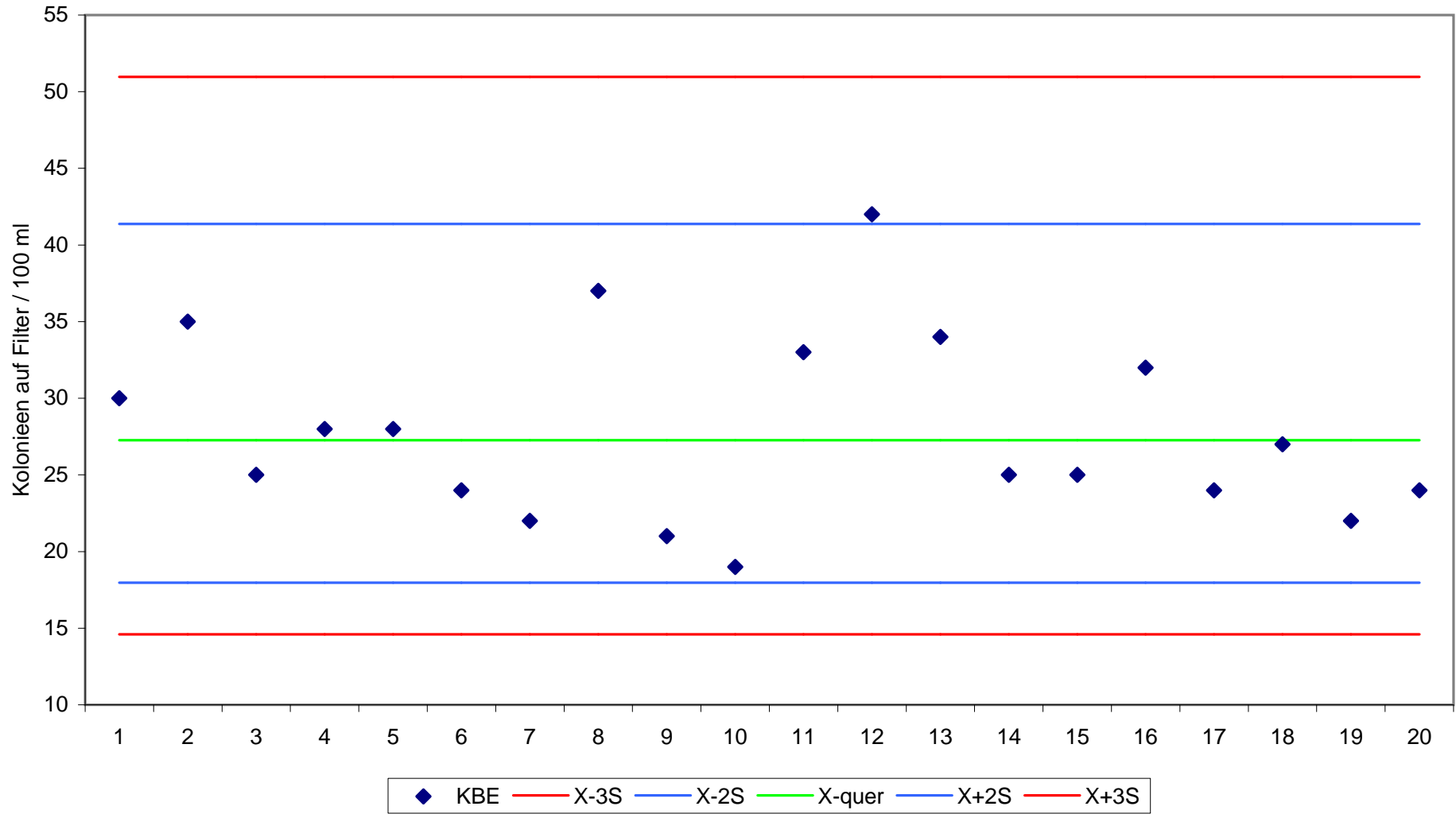
Qualitätskontrolle Ringtest 3-2014 Coliforme Bakterien (TTC-Agar) Gr B 20 Rückstellproben im RV Labor



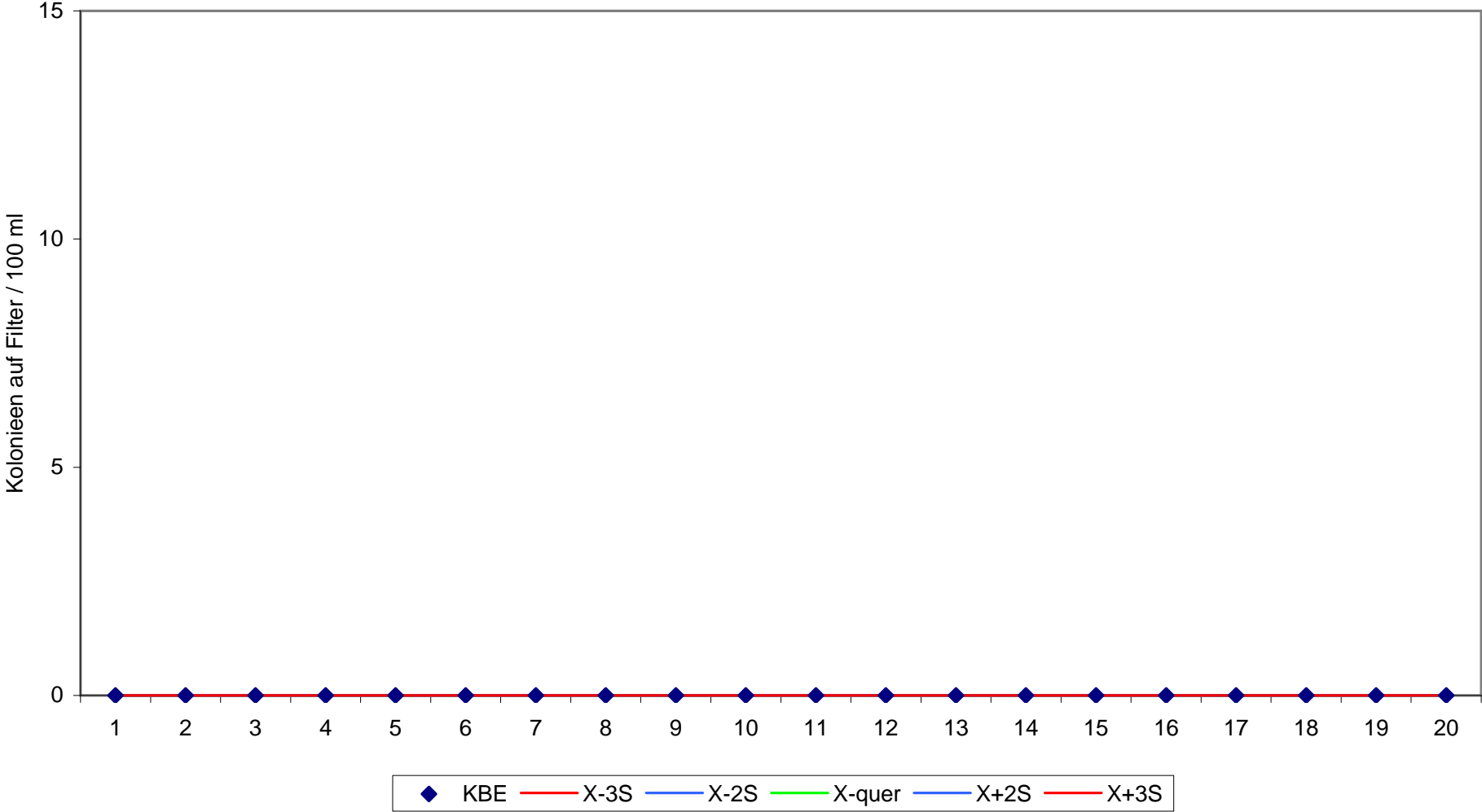
Qualitätskontrolle Ringtest 3-2014 Coliforme Bakterien (TTC-Agar) Gr C 20 Rückstellproben im RV Labor



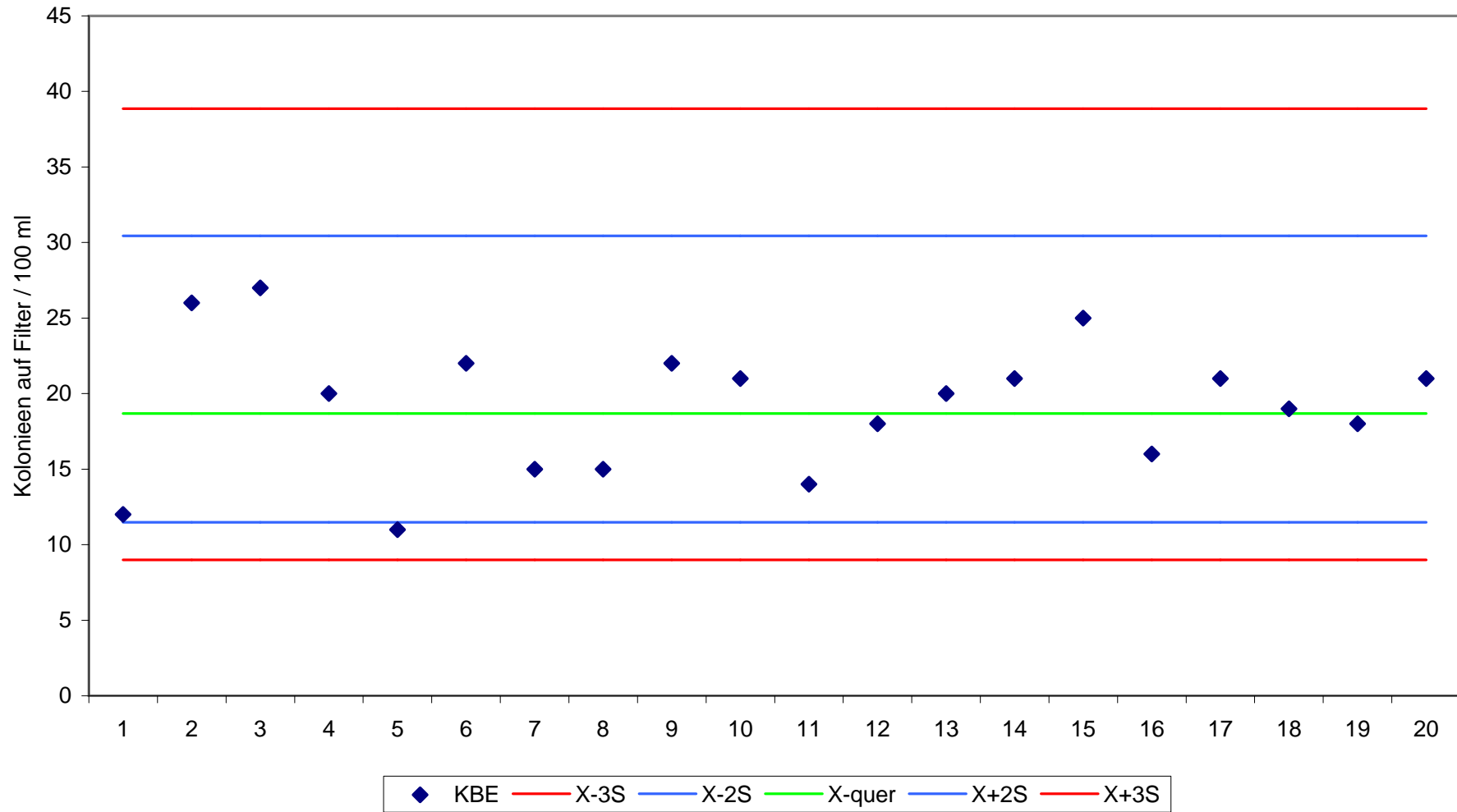
Qualitätskontrolle Ringtest 3-2014 Coliforme Bakterien (TTC-Agar) Gr D 20 Rückstellproben im RV Labor



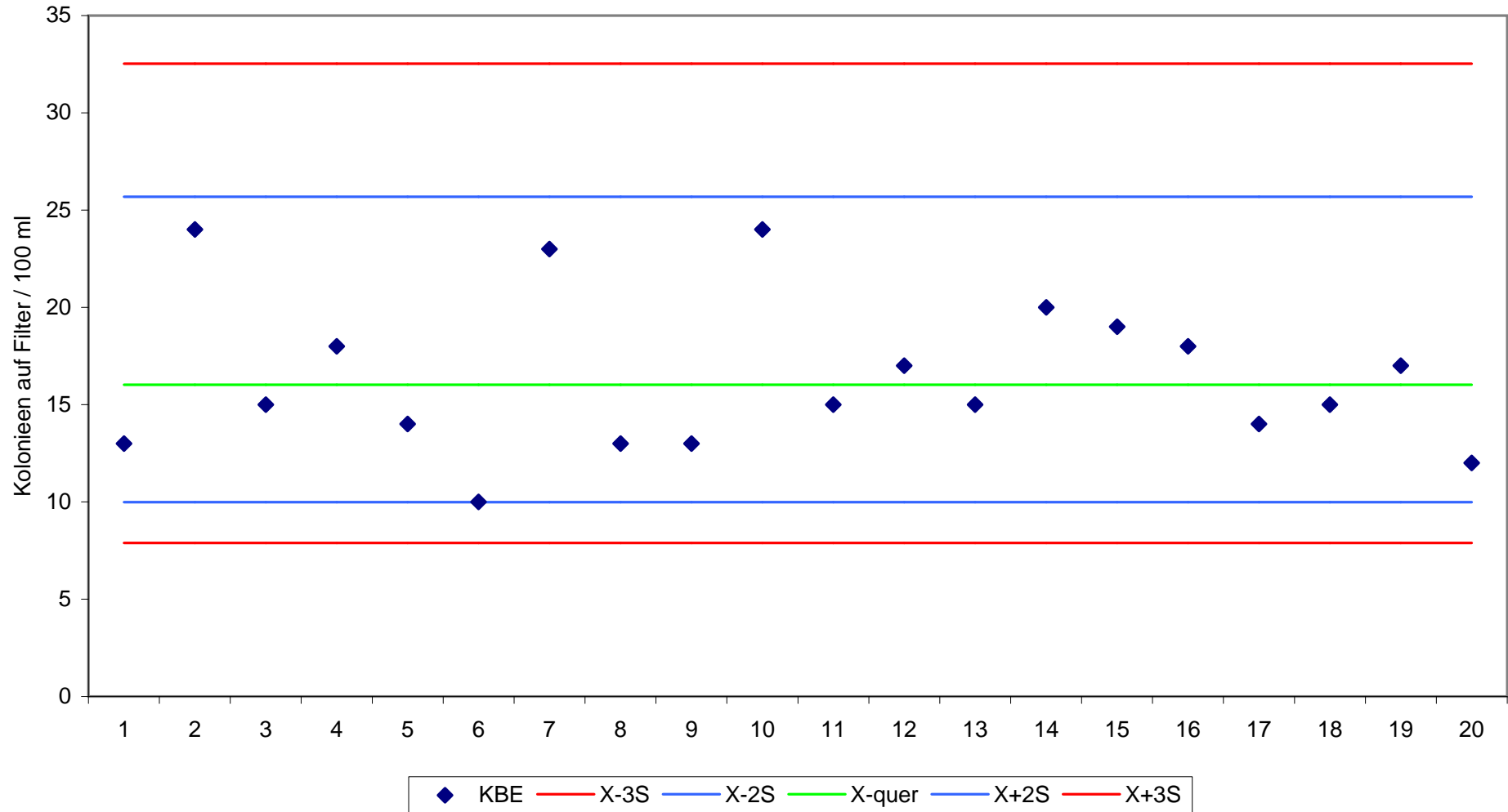
Qualitätskontrolle Ringtest 3-2014 E. coli (TTC-Agar) Gr A 20 Rückstellproben im RV Labor



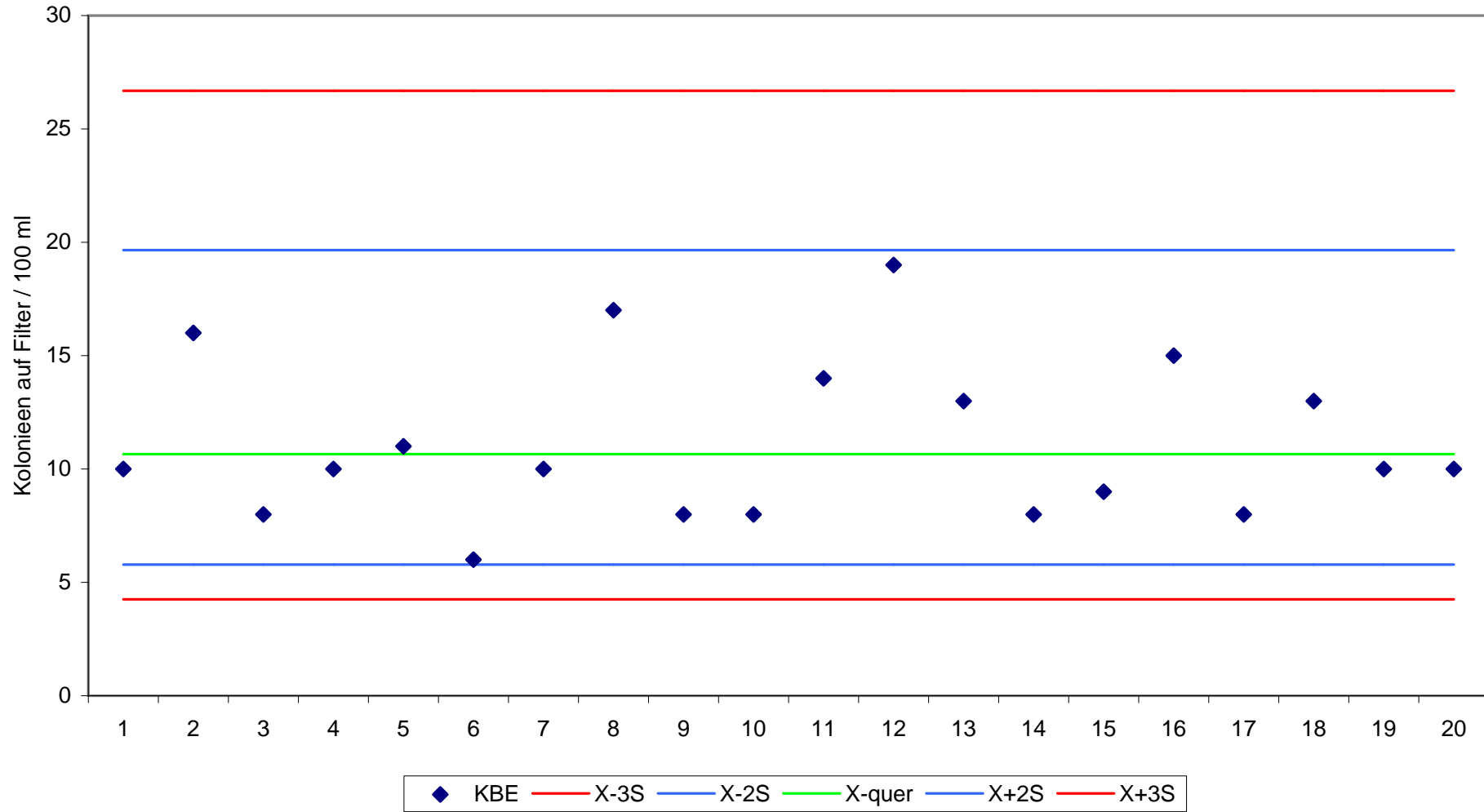
Qualitätskontrolle Ringtest 3-2014 E. coli (TTC-Agar) Gr B 20 Rückstellproben im RV Labor



Qualitätskontrolle Ringtest 3-2014 E. coli (TTC-Agar) Gr C 20 Rückstellproben im RV Labor

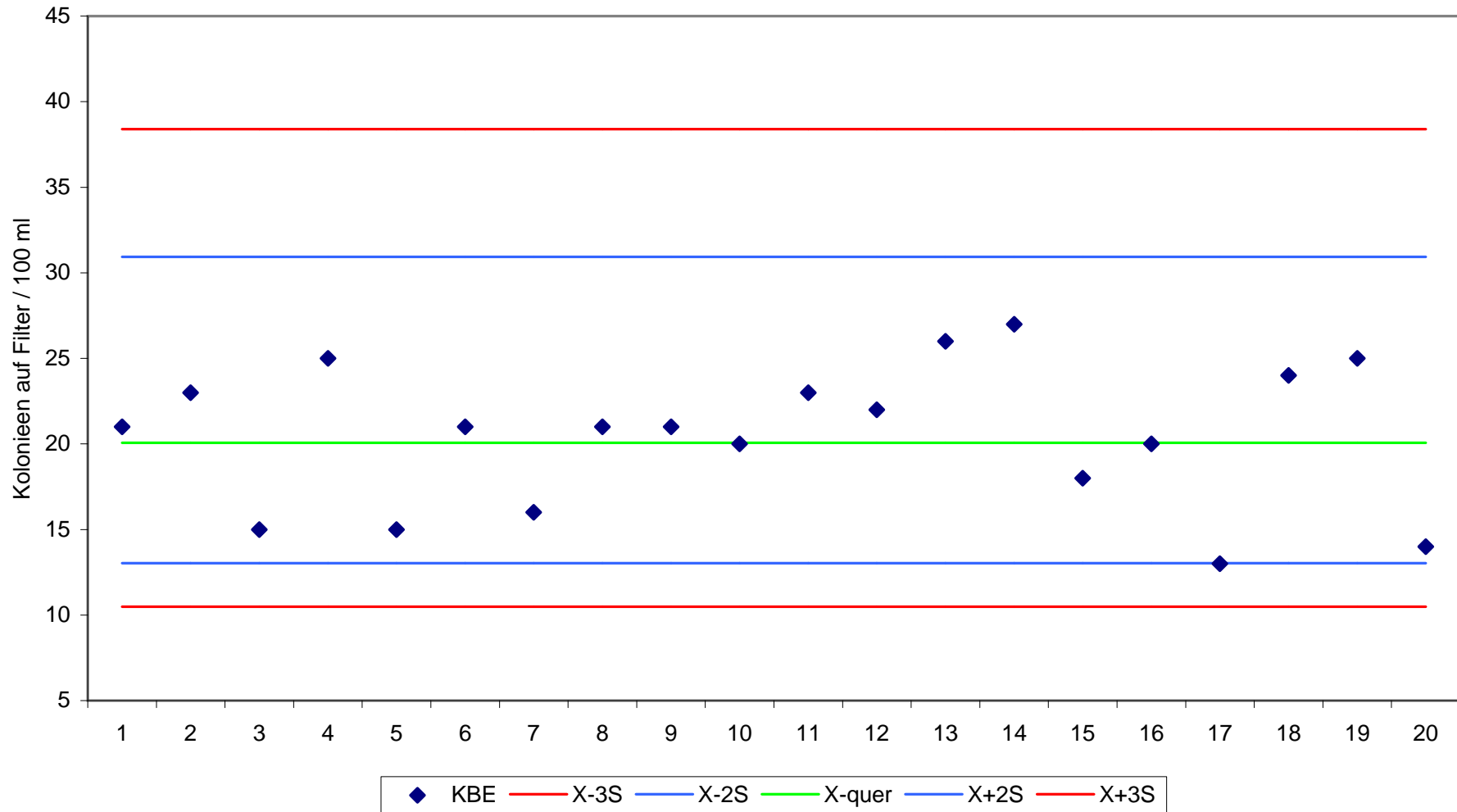


Qualitätskontrolle Ringtest 3-2014 E. coli (TTC-Agar) Gr D 20 Rückstellproben im RV Labor

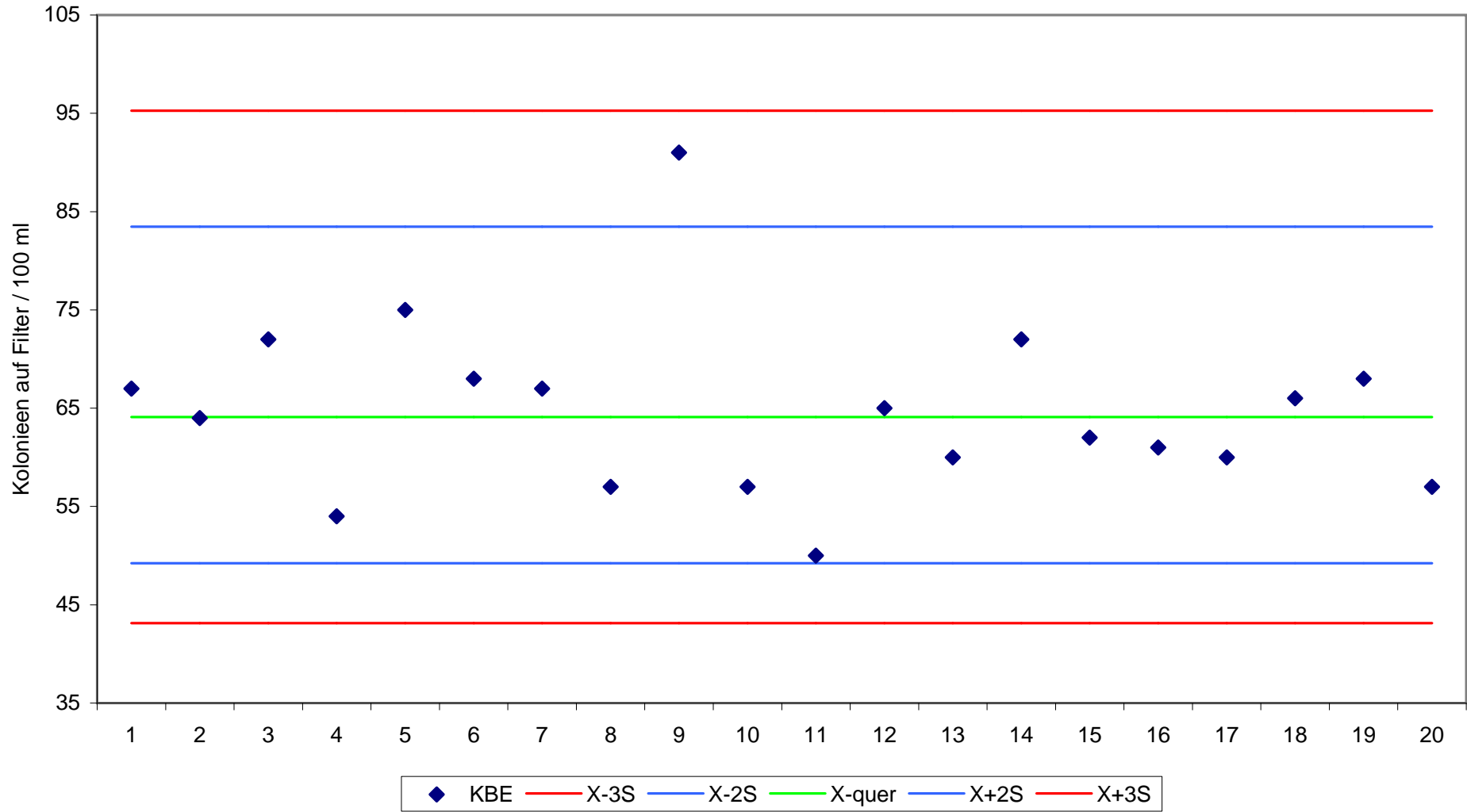




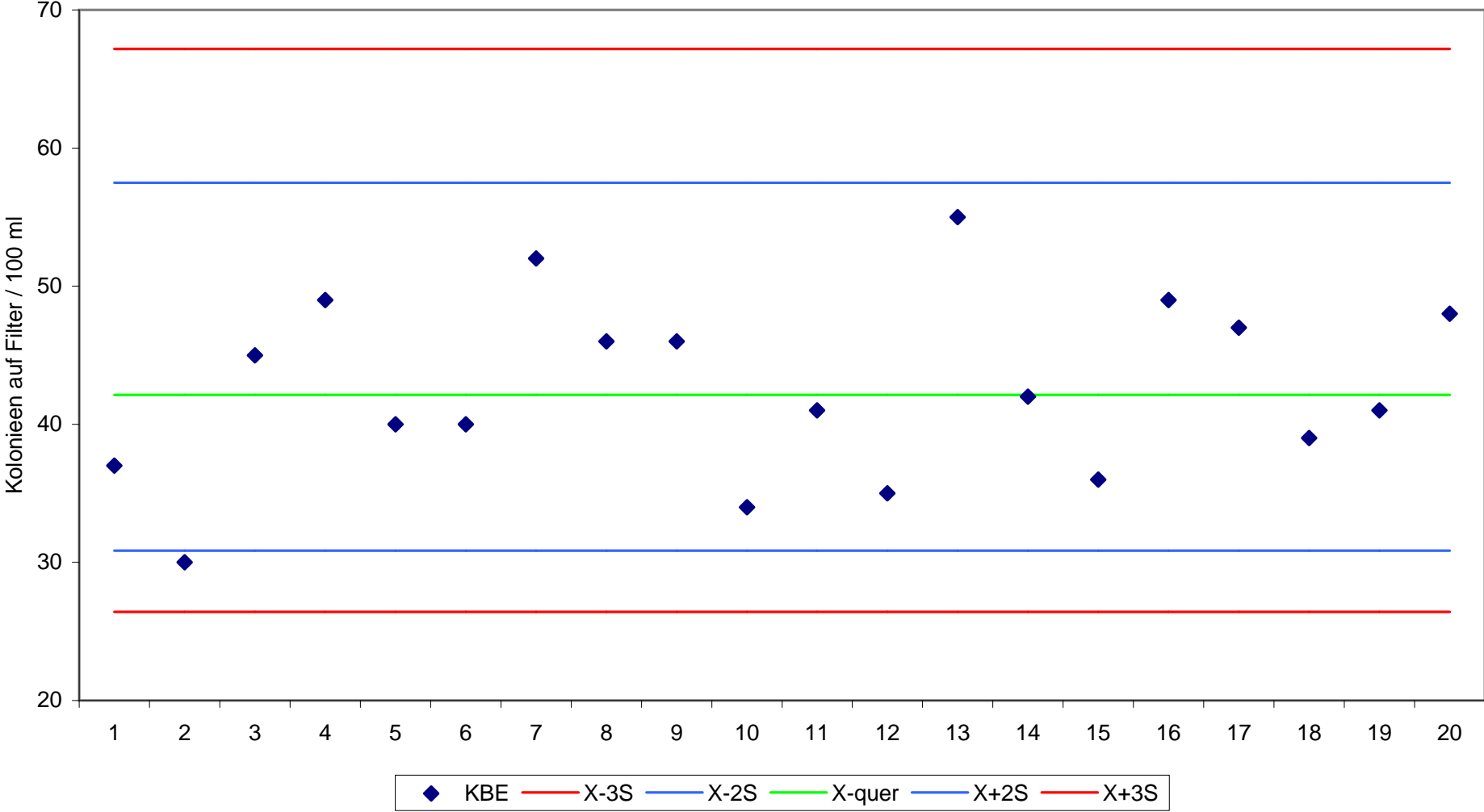
Qualitätskontrolle Ringtest 3-2014 Enterokokken Gr A 20 Rückstellproben im RV Labor



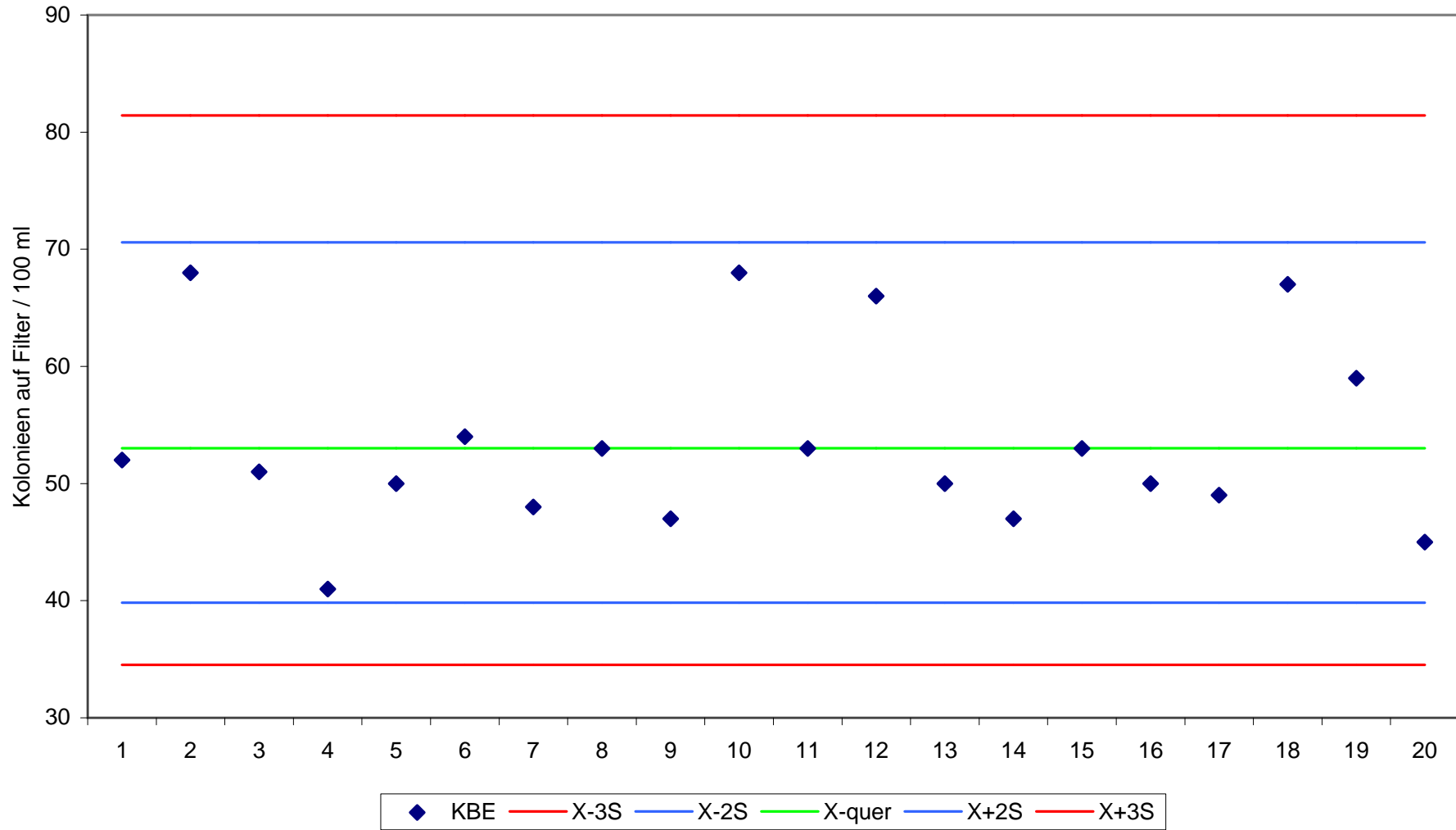
Qualitätskontrolle Ringtest 3-2014 Enterokokken Gr B 20 Rückstellproben im RV Labor



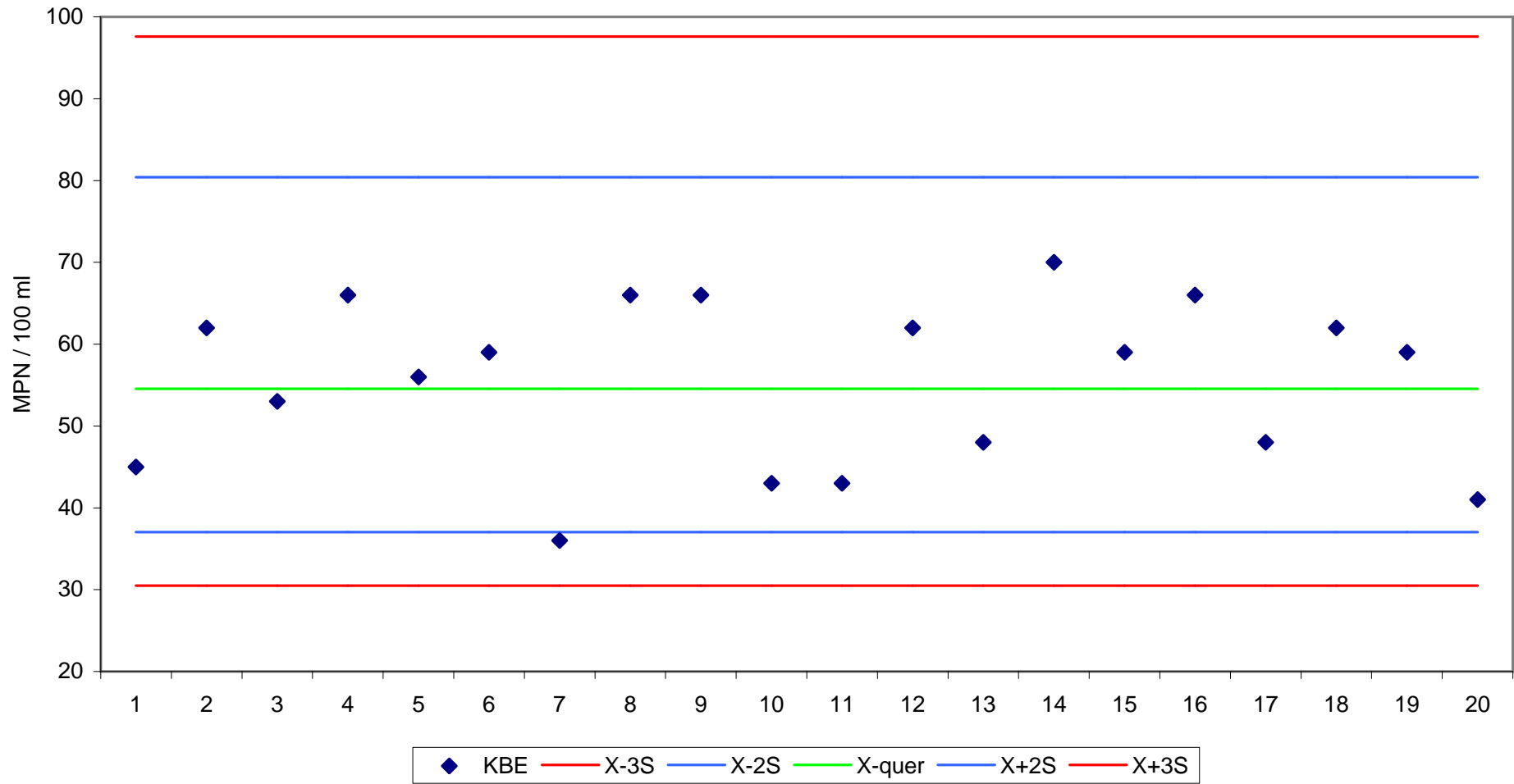
Qualitätskontrolle Ringtest 3-2014 Enterokokken Gr C 20 Rückstellproben im RV Labor



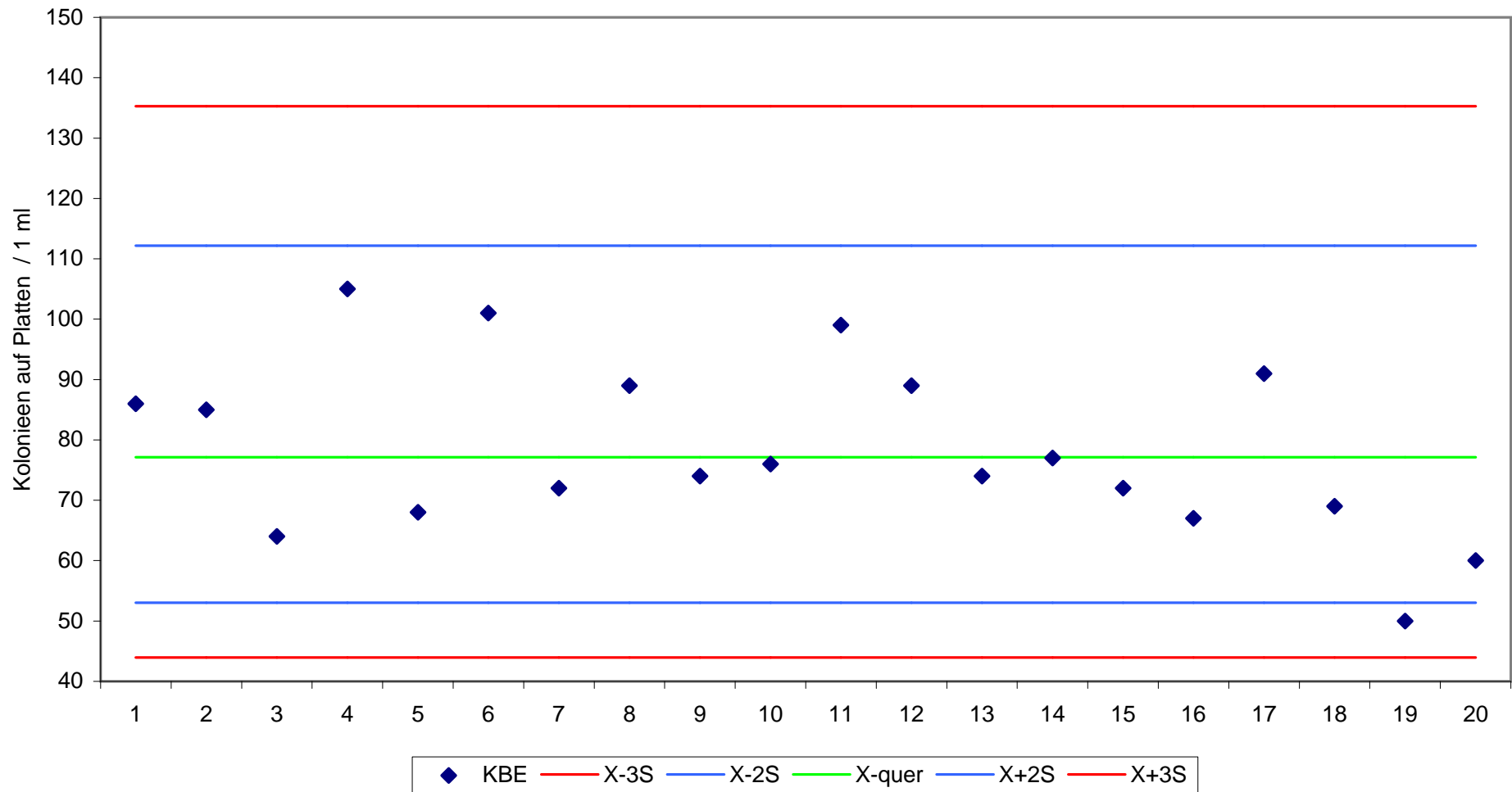
Qualitätskontrolle Ringtest 3-2014 Enterokokken Gr D 20 Rückstellproben im RV Labor



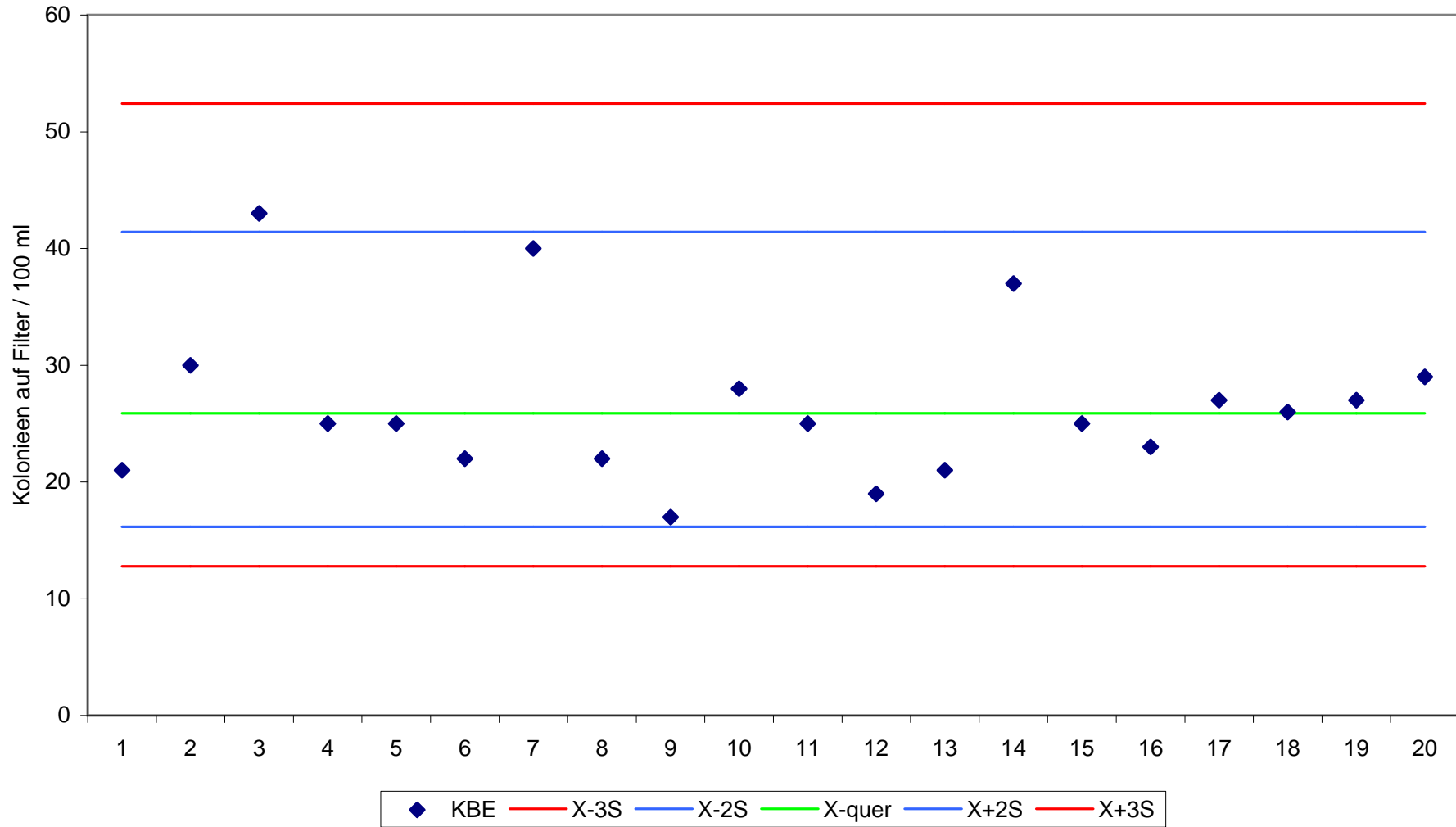
Qualitätskontrolle Ringtest 3-2014 Enterokokken Gr D 20 Rückstellproben im RV Labor  
Enterolert



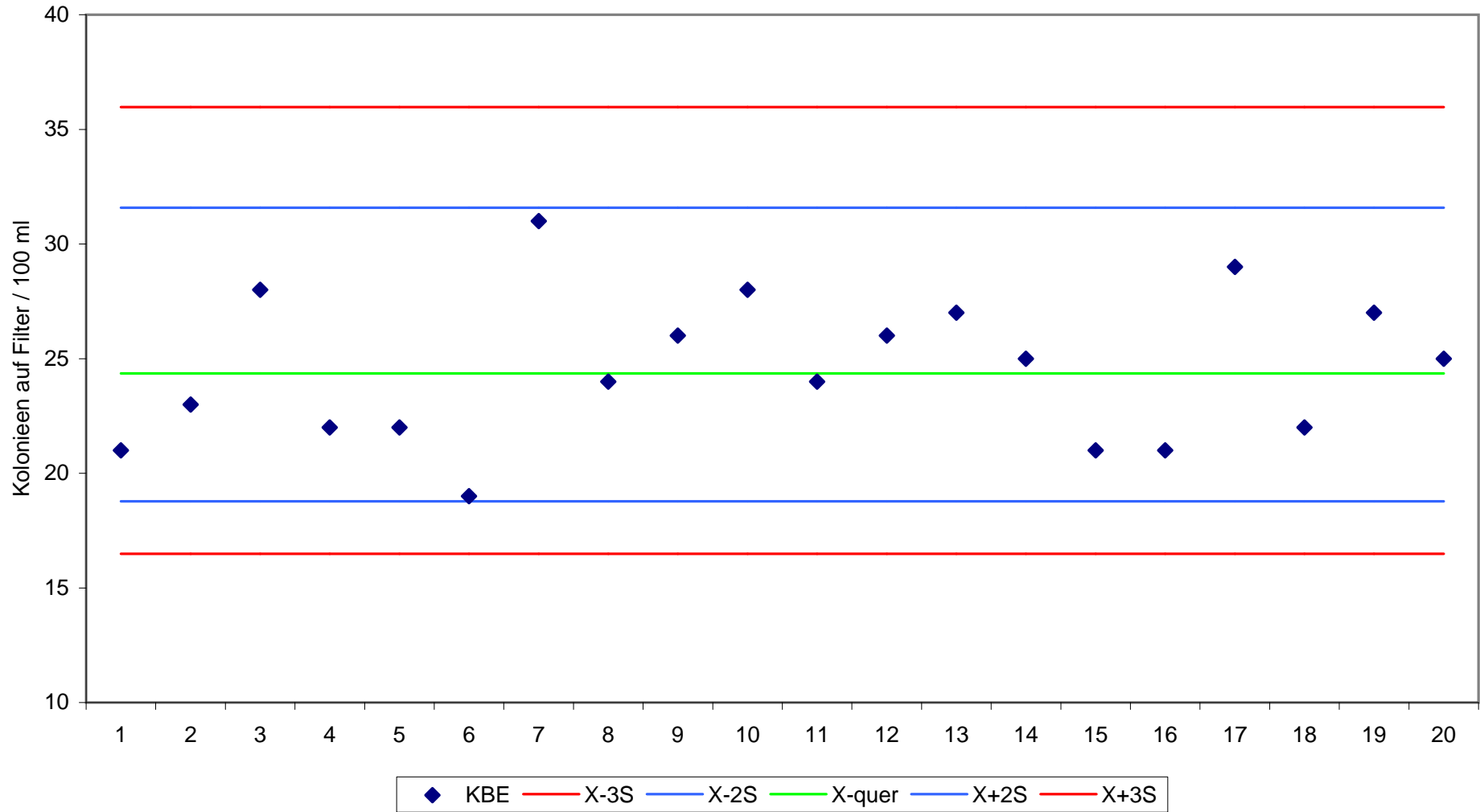
Qualitätskontrolle Ringtest 3-2014 Legionella pneumophila Gr A 20 Rückstellproben im RV Labor  
Direktansatz 2 x 0,5 ml



Qualitätskontrolle Ringtest 3-2014 Legionella pneumophila Gr B 20 Rückstellproben im RV Labor

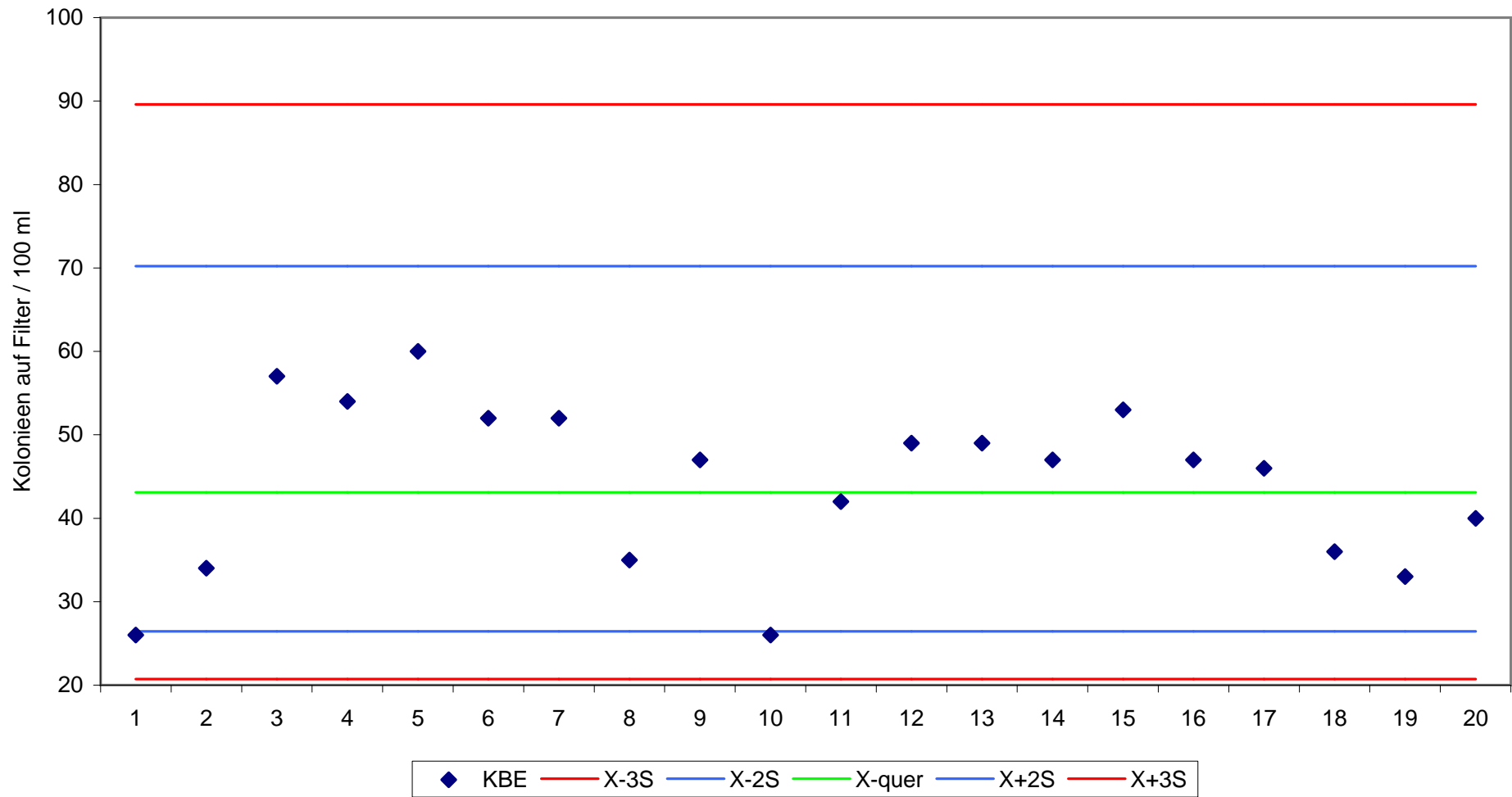


Qualitätskontrolle Ringtest 3-2014 Legionella pneumophila Gr C 20 Rückstellproben im RV Labor

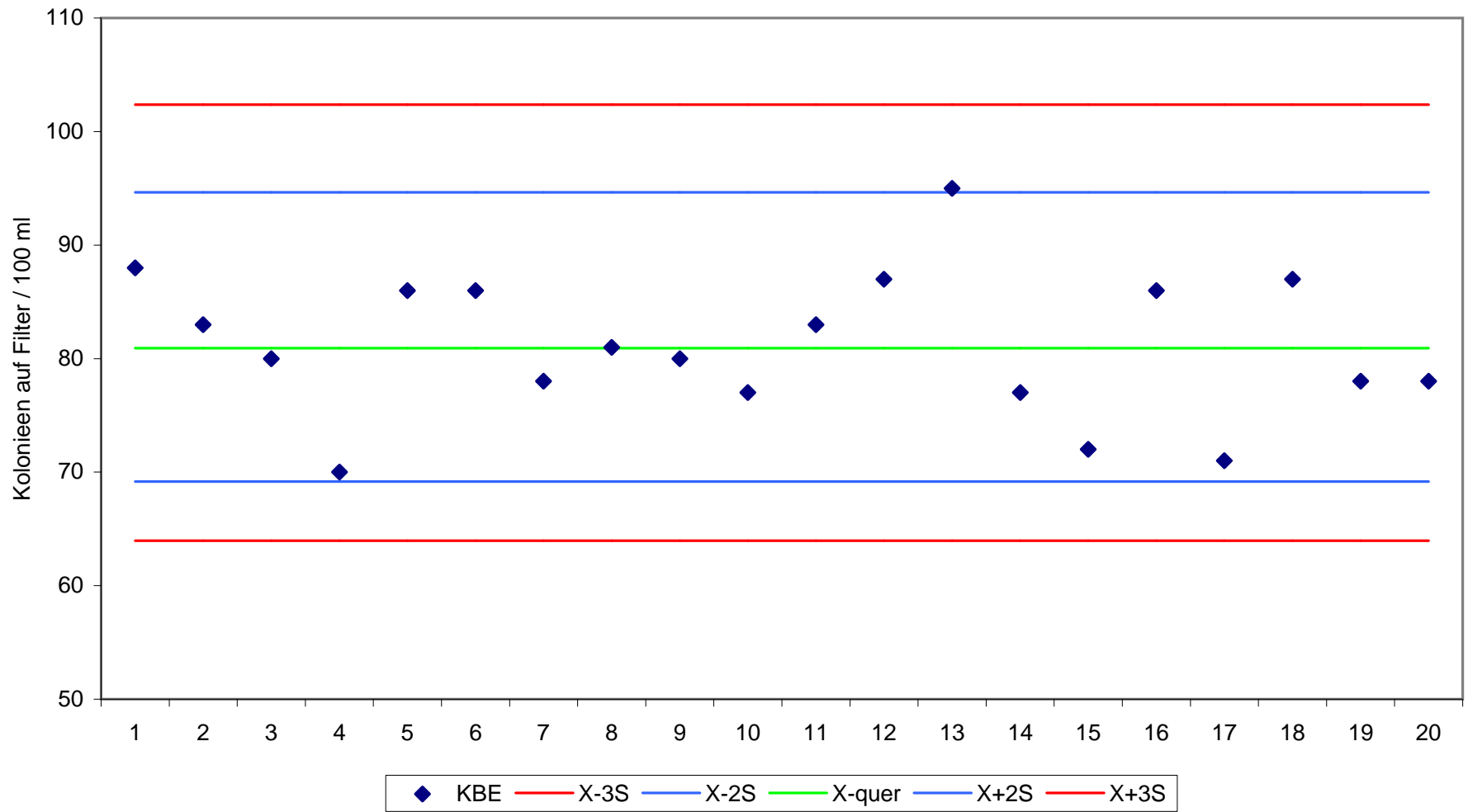




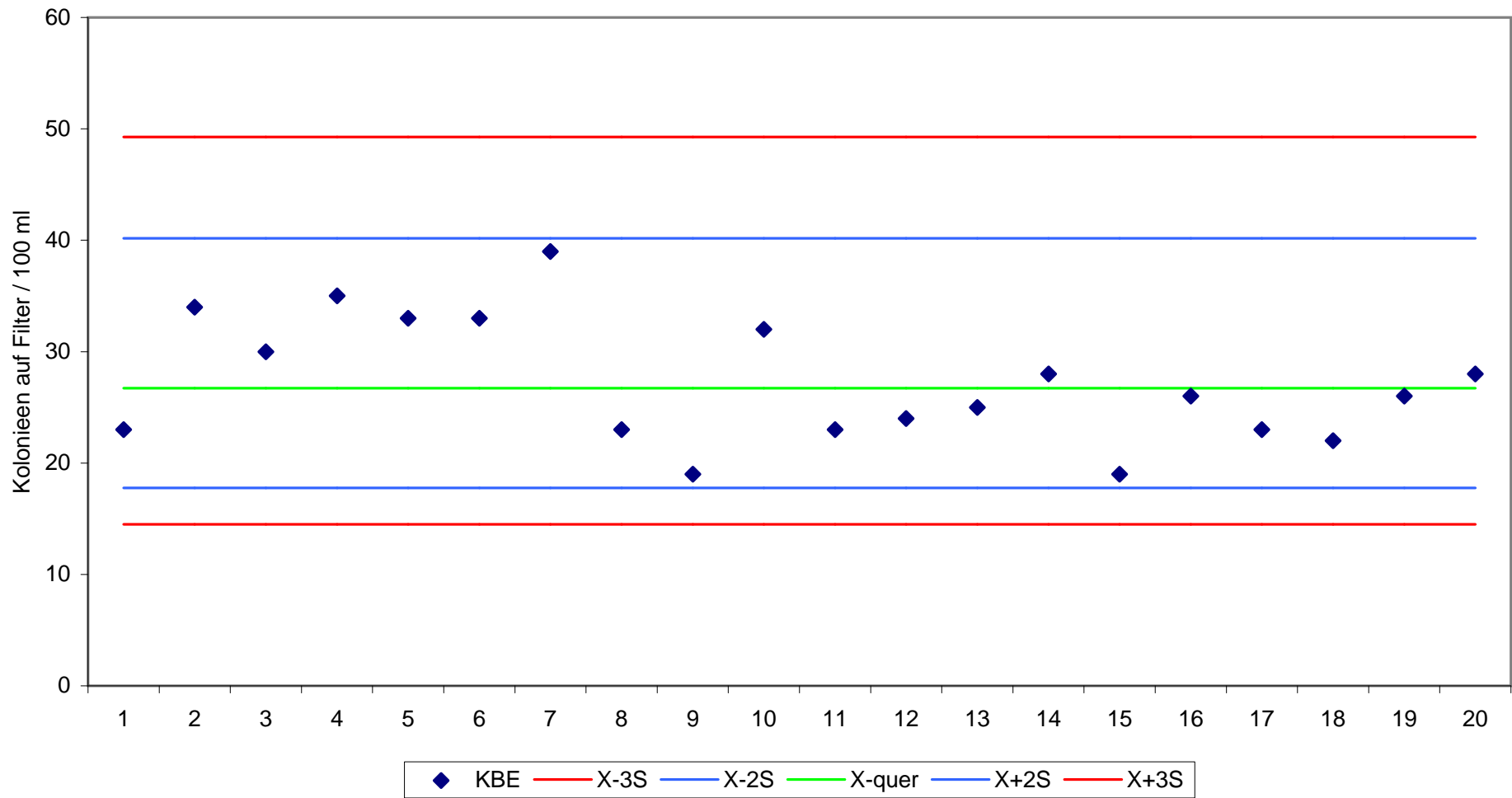
Qualitätskontrolle Ringtest 3-2014 Clostridium perfringens Gr A 20 Rückstellproben im RV Labor  
tsc Agar



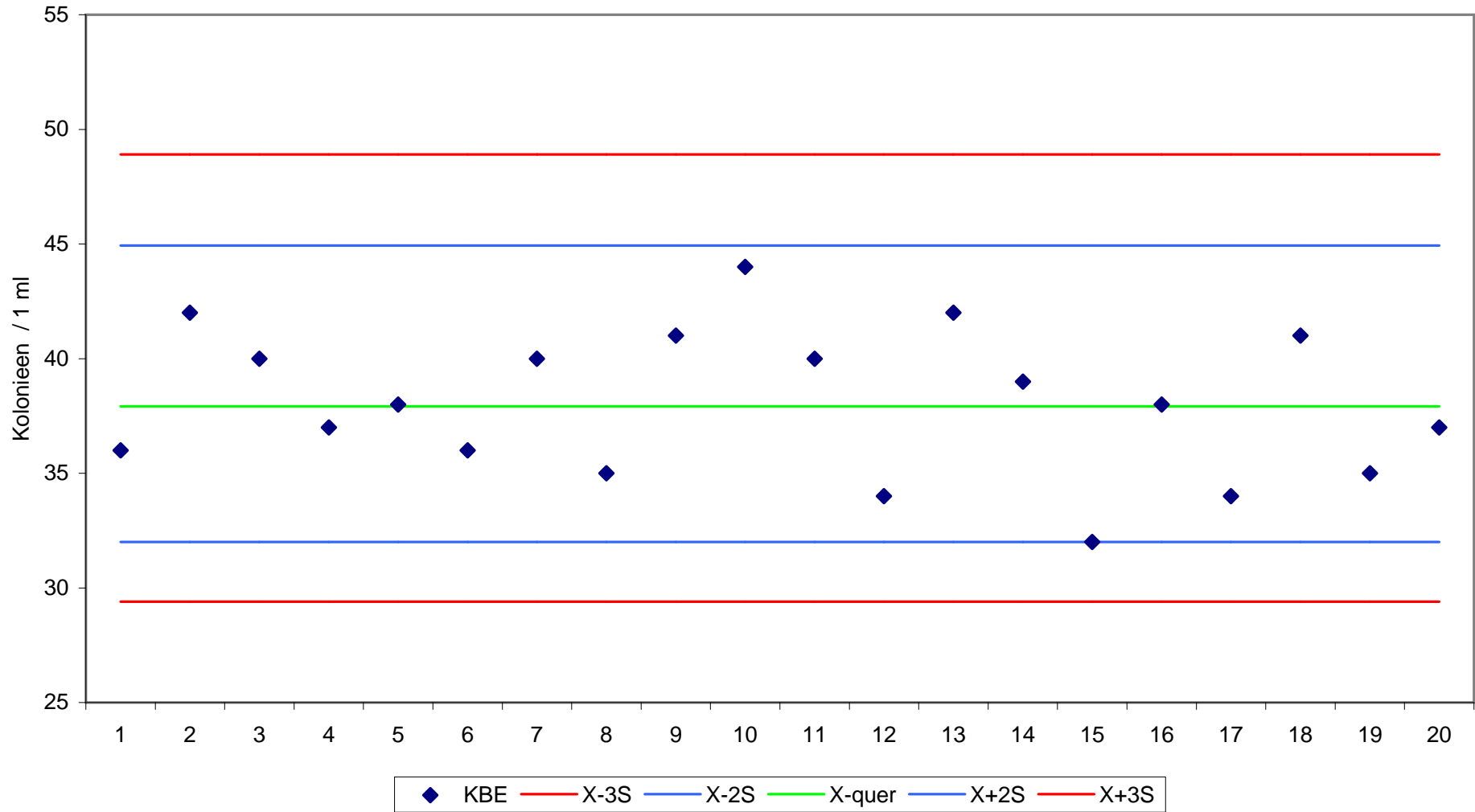
Qualitätskontrolle Ringtest 3-2014 Clostridium perfringens Gr B 20 Rückstellproben im RV Labor  
tsc Agar



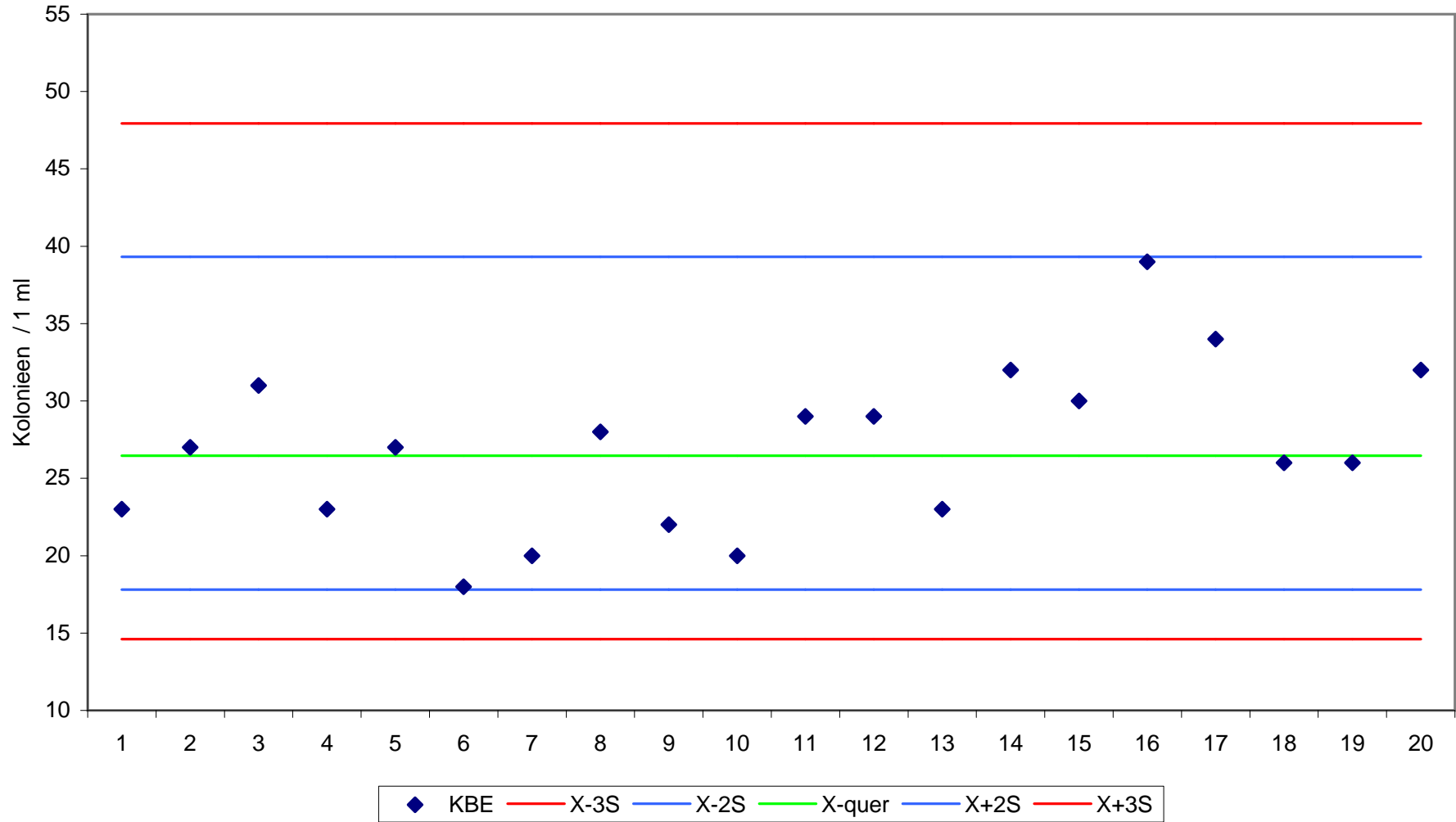
Qualitätskontrolle Ringtest 3-2014 Clostridium perfringens Gr C 20 Rückstellproben im RV Labor  
tsc Agar



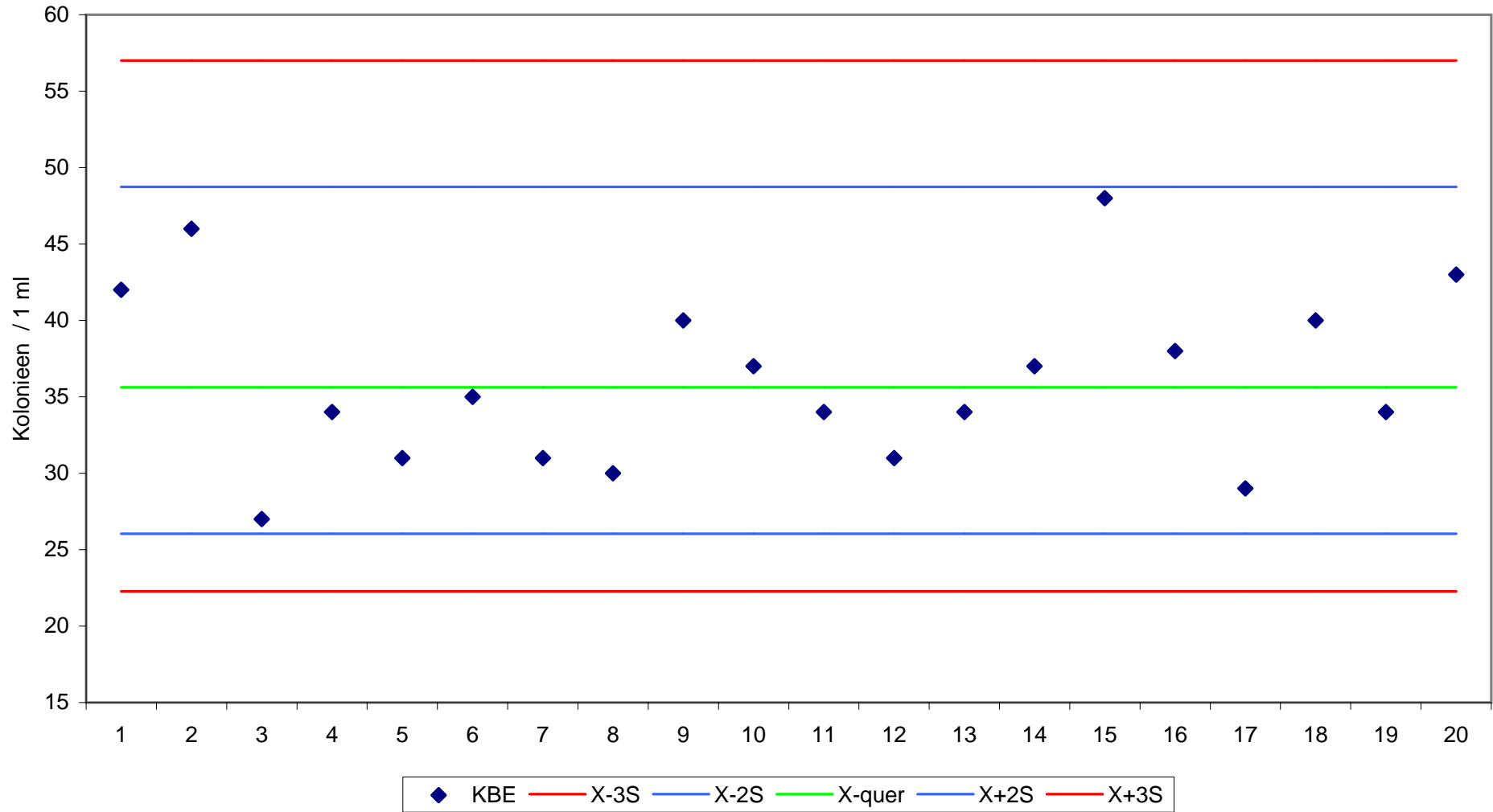
Qualitätskontrolle Ringtest 3-2014 KBE (AF) 22°Gr A 20 Rückstellproben im RV Labor



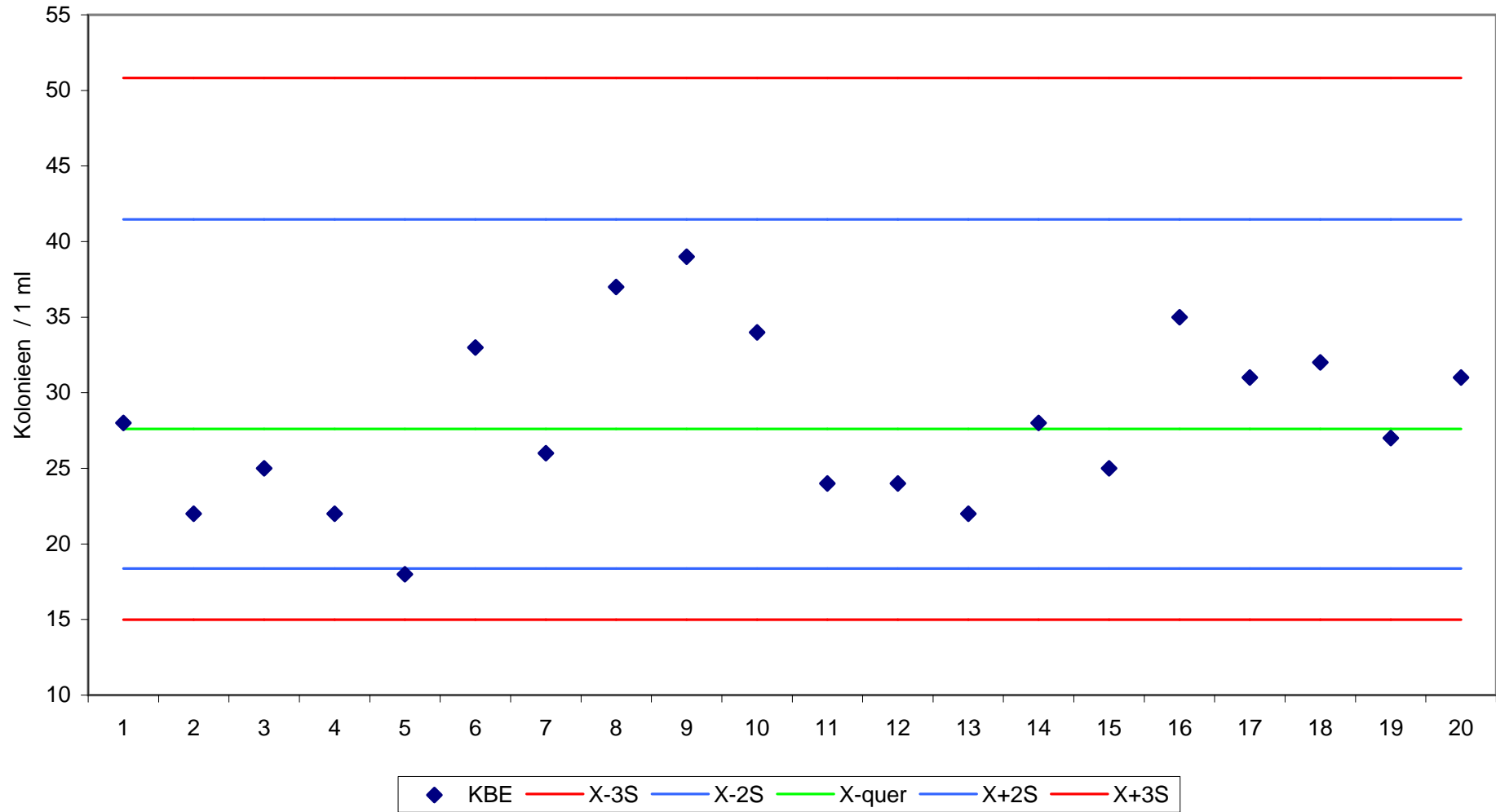
Qualitätskontrolle Ringtest 3-2014 KBE (NF) 22°Gr A 20 Rückstellproben im RV Labor



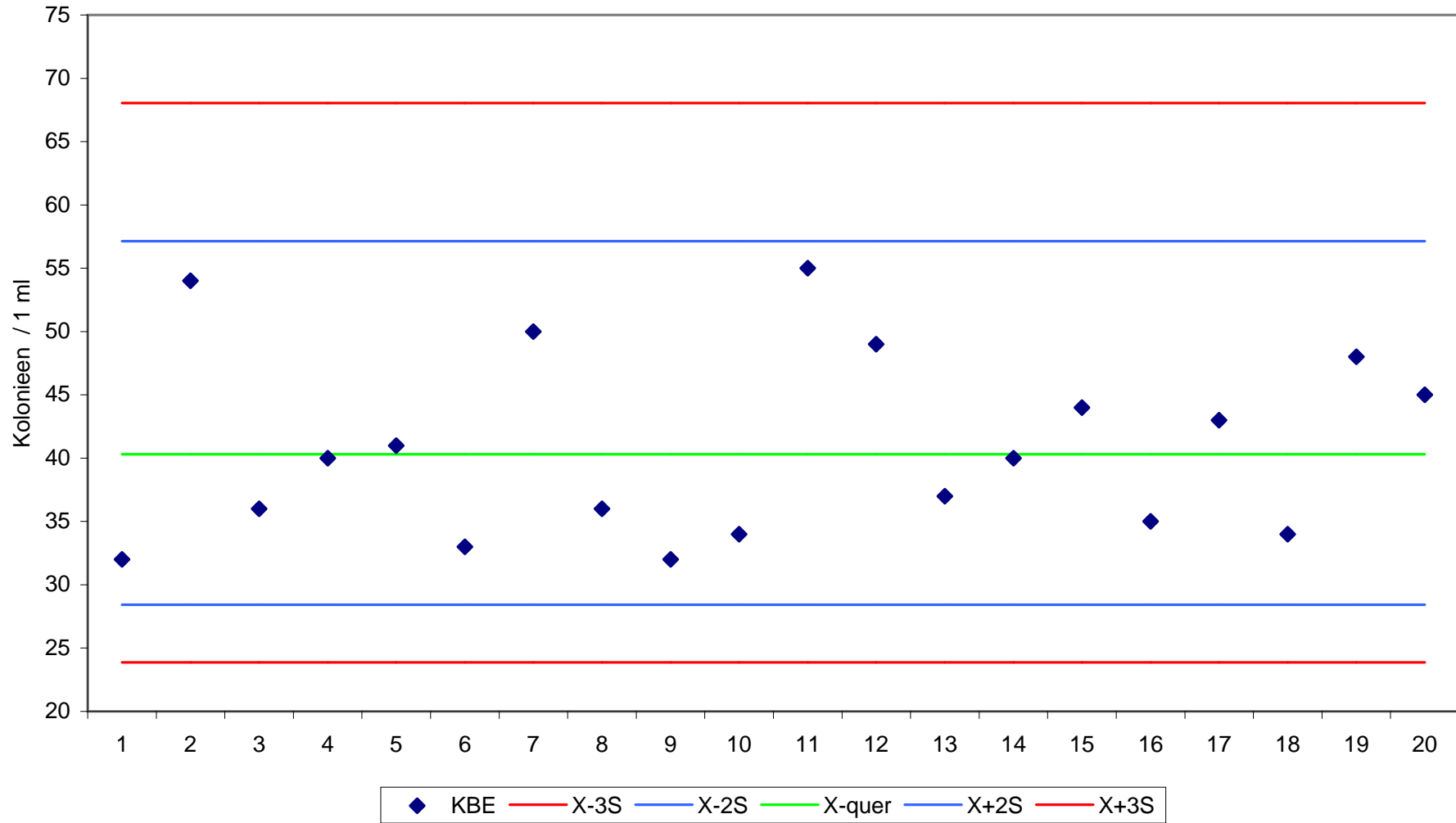
Qualitätskontrolle Ringtest 3-2014 KBE (AF) 36°Gr A 20 Rückstellproben im RV Labor



Qualitätskontrolle Ringtest 3-2014 KBE (NF) 36°Gr A 20 Rückstellproben im RV Labor

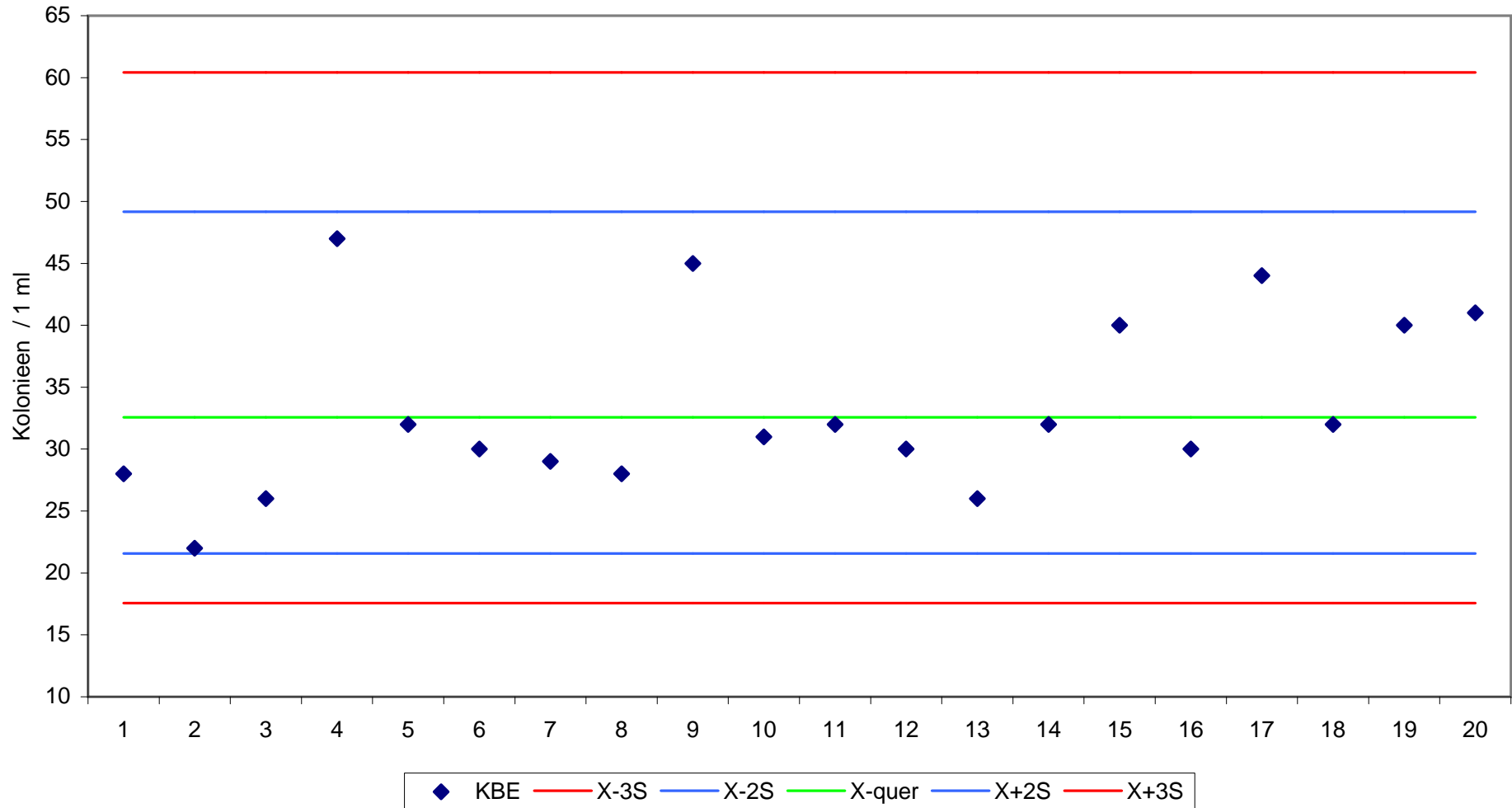


Qualitätskontrolle Ringtest 3-2014 KBE (AF) 22°Gr B 20 Rückstellproben im RV Labor

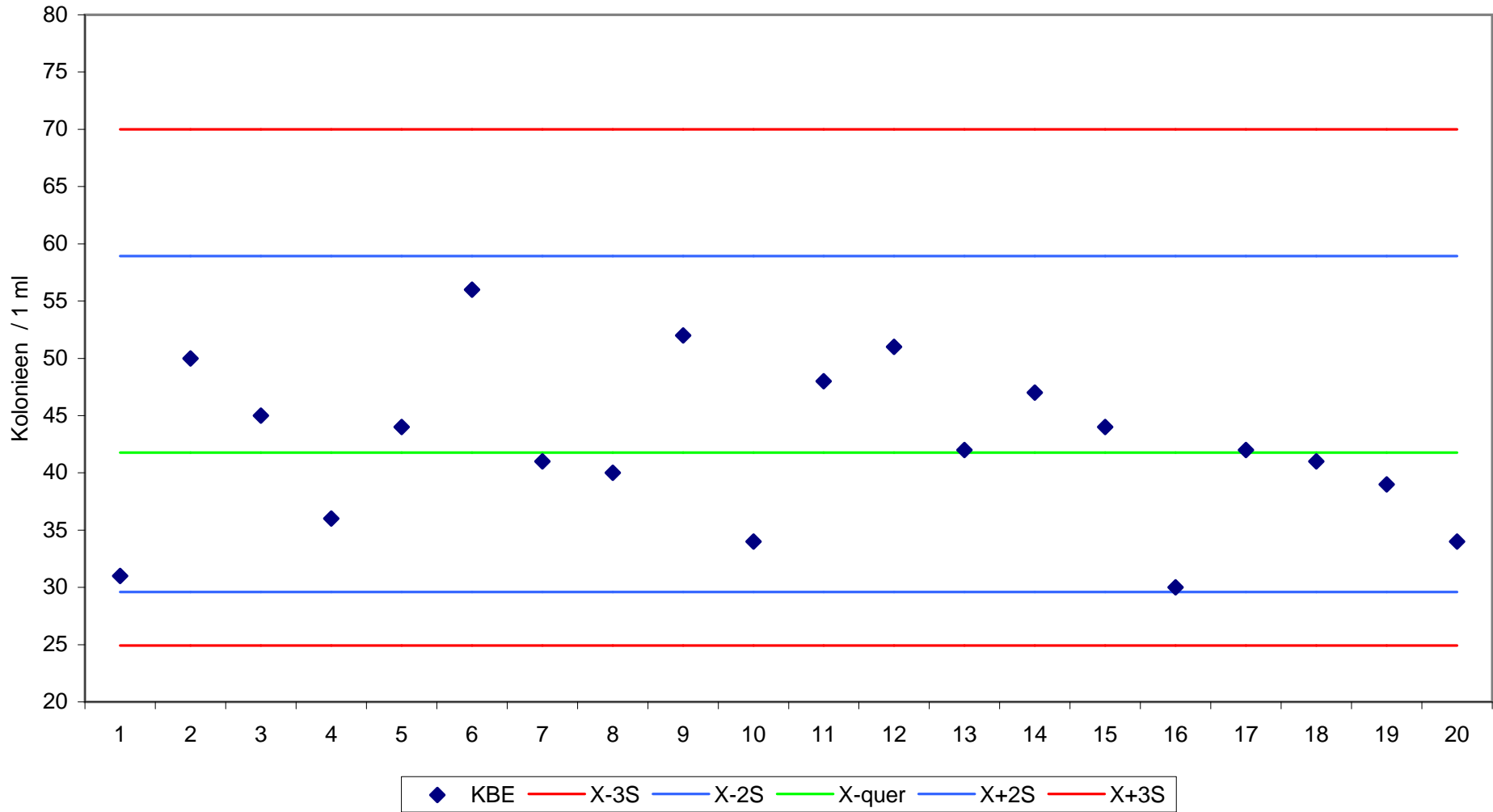




Qualitätskontrolle Ringtest 3-2014 KBE (NF) 22°Gr B 20 Rückstellproben im RV Labor



Qualitätskontrolle Ringtest 3-2014 KBE (AF) 36°Gr B 20 Rückstellproben im RV Labor



Qualitätskontrolle Ringtest 3-2014 KBE (NF) 36°Gr B 20 Rückstellproben im RV Labor

